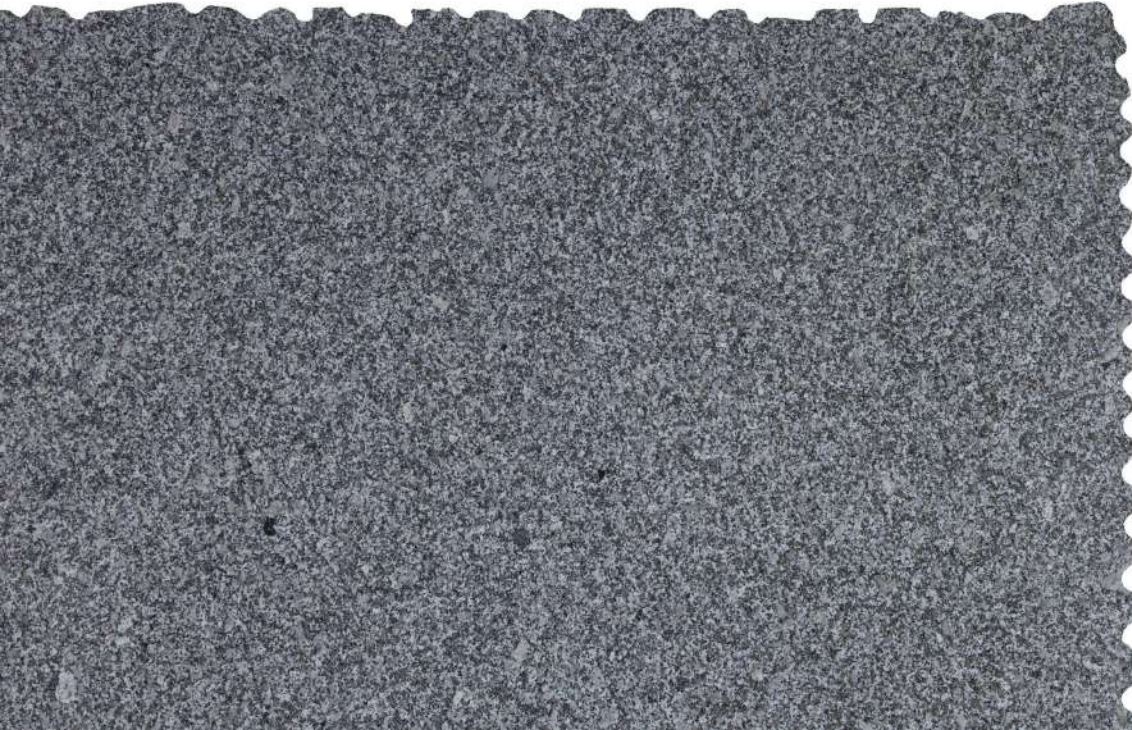


GRIS CADALSO

Technical Data Sheet



Quarry location: 40° 16' 46,50" N

4° 25' 17,32" W



Cadalso de los vidrios - Madrid, Spain

WWW.GRUPIMAR.ES

INFO@GRUPIMAR.COM

GRUPIMAR[®]
MARCELINO GROUP

Petrographic denomination	Biotitic Granite	UNE - EN 12407
Apparent Density (Kg/m ³)	2640	UNE - EN 1936
Flexural Strength (MPa)	12,3	UNE - EN 12372
Water absorption (%)	0,2	UNE - EN 13755
Compressive strength (MPa)	205	UNE - EN 1926
Reduction in flexural strength after 48 cycles frost- thaw (%)	4,4	UNE - EN 12371
Breaking load at dowel holes (N)	2650	UNE - EN 13364
Abrasion resistance (mm)	16,1	UNE - EN 14157
Resistance to ageing by thermal shock (%)	0,03	UNE - EN 14066
Reaction to fire	Class A1	Commission Decision 96/603/EC



WWW.GRUPIMAR.ES

INFO@GRUPIMAR.COM

GRUPIMAR[®]
MARCELINO GROUP

A close-up photograph of a granite surface in a dry state. The texture is granular and uneven, with a mix of light beige, grey, and dark grey mineral grains. The surface appears matte and slightly textured.

Dry

A close-up photograph of the same granite surface in a wet state. The water has filled the pores and crevices, making the surface appear much smoother and more uniform in color. The dark grey and light beige grains are still visible but less distinct due to the moisture.

Wet

WWW.GRUPIMAR.ES

INFO@GRUPIMAR.COM

GRUPIMAR[®]
MARCELINO GROUP



Flamed



WWW.GRUPIMAR.ES

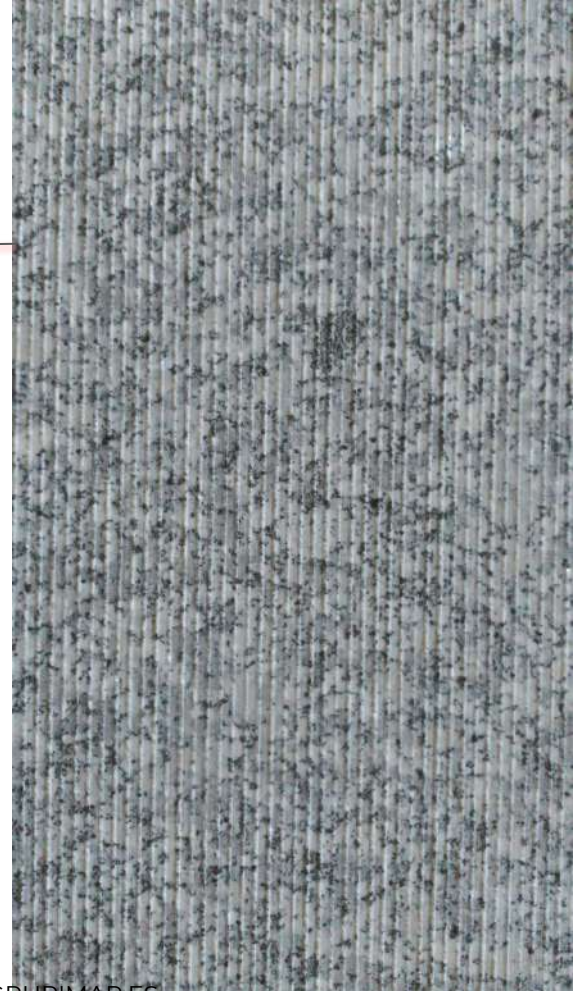
INFO@GRUPIMAR.COM

GRUPIMAR[®]
MARCELINO GROUP



Polished

Striped



WWW.GRUPIMAR.ES

INFO@GRUPIMAR.COM

GRUPIMAR[®]
MARCELINO GROUP



Flamed (Wet)



Flamed (Dry)

WWW.GRUPIMAR.ES

INFO@GRUPIMAR.COM

GRUPIMAR[®]
MARCELINO GROUP



Shot Blasted

WWW.GRUPIMAR.ES

INFO@GRUPIMAR.COM

GRUPIMAR[®]
MARCELINO GROUP

Shot Blasted (Dry)



Shot Blasted (Wet)

WWW.GRUPIMAR.ES

INFO@GRUPIMAR.COM

GRUPIMAR[®]
MARCELINO GROUP

Leathered



WWW.GRUPIMAR.ES

INFO@GRUPIMAR.COM

GRUPIMAR[®]
MARCELINO GROUP



Honed

WWW.GRUPIMAR.ES

INFO@GRUPIMAR.COM

GRUPIMAR[®]
MARCELINO GROUP



Slab

WWW.GRUPIMAR.ES

INFO@GRUPIMAR.COM

GRUPIMAR[®]
MARCELINO GROUP



Cobblestones

WWW.GRUPIMAR.ES

INFO@GRUPIMAR.COM

GRUPIMAR[®]
MARCELINO GROUP

Cobblestones



WWW.GRUPIMAR.ES

INFO@GRUPIMAR.COM

GRUPIMAR[®]
MARCELINO GROUP

Cobblestones



WWW.GRUPIMAR.ES

INFO@GRUPIMAR.COM

GRUPIMAR[®]
MARCELINO GROUP



Kerbs



WWW.GRUPIMAR.ES

INFO@GRUPIMAR.COM

GRUPIMAR[®]
MARCELINO GROUP

Special Pieces



WWW.GRUPIMAR.ES

INFO@GRUPIMAR.COM

GRUPIMAR[®]
MARCELINO GROUP



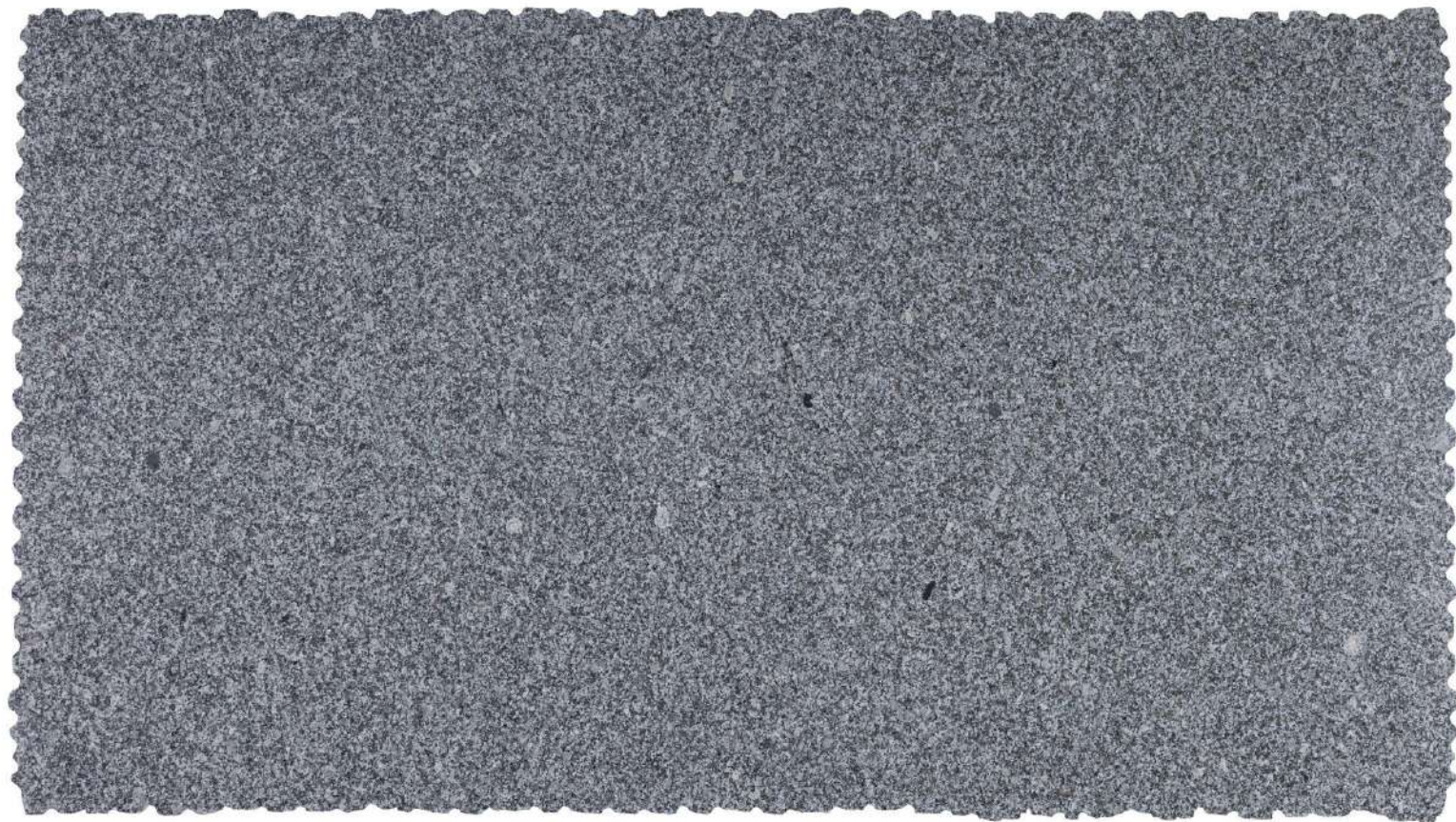
Podotactile

WWW.GRUPIMAR.ES

INFO@GRUPIMAR.COM

GRUPIMAR[®]
MARCELINO GROUP





WWW.GRUPIMAR.ES

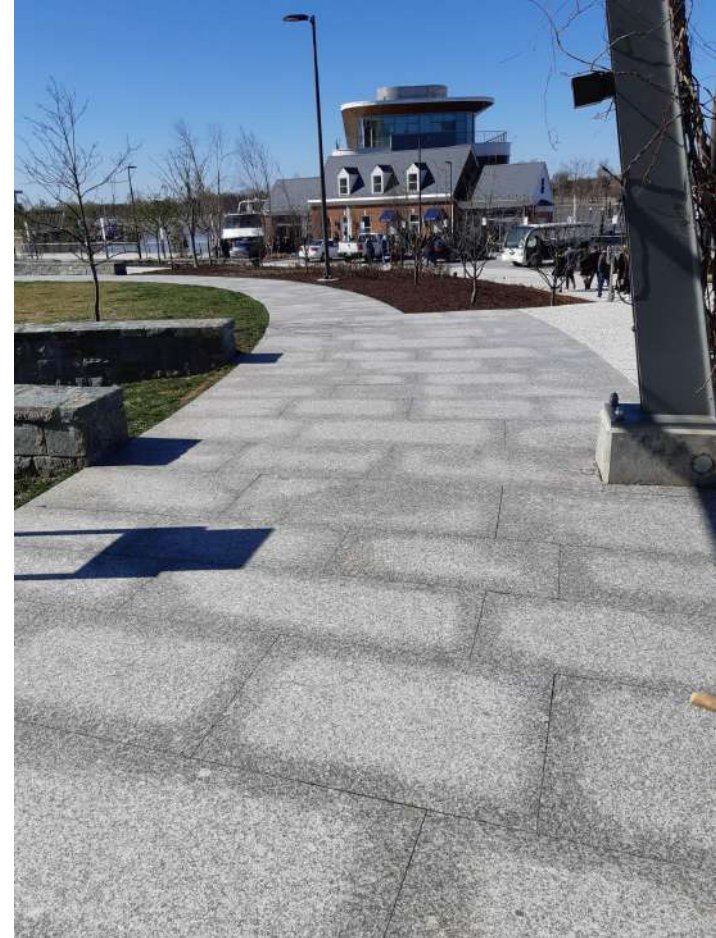
INFO@GRUPIMAR.COM

GRUPIMAR[®]
MARCELINO GROUP

Projects



District Wharf
Waterfront
Park -
Washington
D.C., U.S.A.



WWW.GRUPIMAR.ES

INFO@GRUPIMAR.COM

GRUPIMAR[®]
MARCELINO GROUP

Projects

District Wharf Waterfront Park -
Washington D.C., U.S.A.



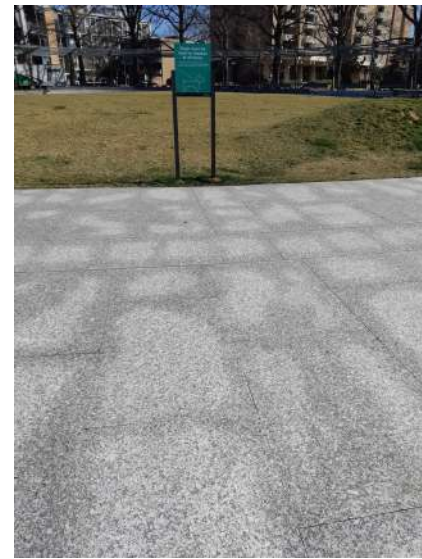
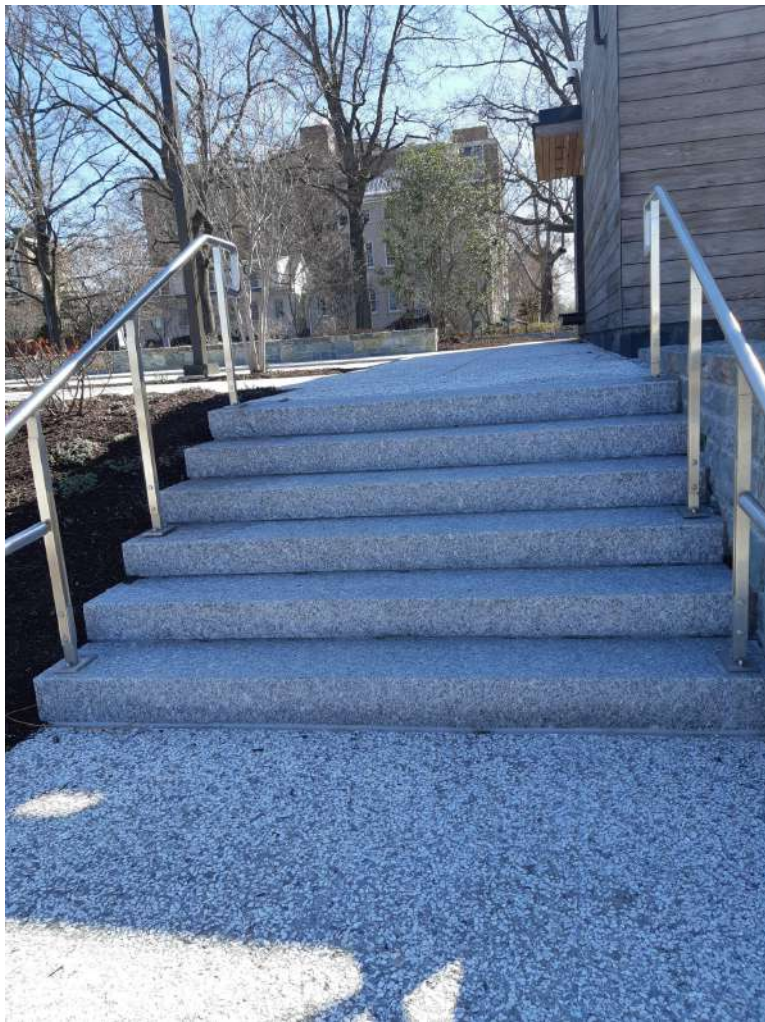
*Pavers, stairs and
benches*



WWW.GRUPIMAR.ES

INFO@GRUPIMAR.COM

GRUPIMAR[®]
MARCELINO GROUP



District Wharf Waterfront Park -
Washington D.C., U.S.A.

WWW.GRUPIMAR.ES

INFO@GRUPIMAR.COM

GRUPIMAR[®]
MARCELINO GROUP



Tramway Caen - Caen,
France



WWW.GRUPIMAR.ES

INFO@GRUPIMAR.COM

GRUPIMAR[®]
MARCELINO GROUP



Rathbone Square
- London, U.K.

WWW.GRUPIMAR.ES

INFO@GRUPIMAR.COM

GRUPIMAR[®]
MARCELINO GROUP

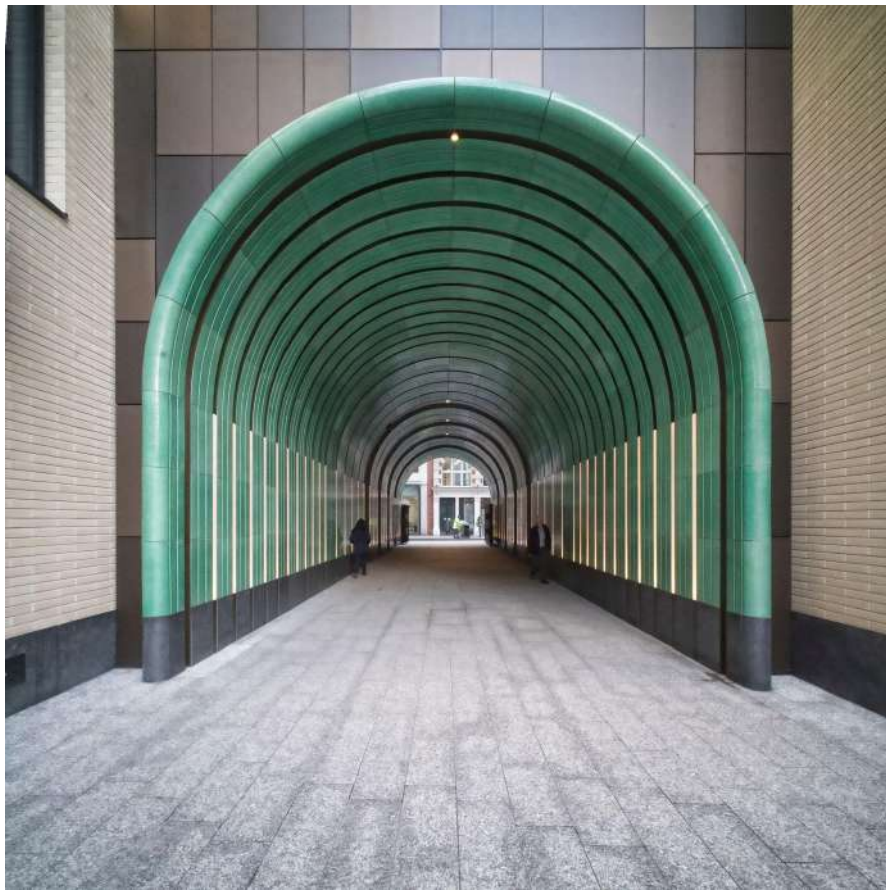


Rathbone Square - London,
U.K.

WWW.GRUPIMAR.ES

INFO@GRUPIMAR.COM

GRUPIMAR[®]
MARCELINO GROUP



Rathbone Square - London,
U.K.




Several streets at Paris,
France

WWW.GRUPIMAR.ES

INFO@GRUPIMAR.COM

GRUPIMAR[®]
MARCELINO GROUP



 Paris, France

WWW.GRUPIMAR.ES

INFO@GRUPIMAR.COM

GRUPIMAR[®]
MARCELINO GROUP




Tramway Paris, France

WWW.GRUPIMAR.ES

INFO@GRUPIMAR.COM

GRUPIMAR[®]
MARCELINO GROUP



 Paris, France



WWW.GRUPIMAR.ES

INFO@GRUPIMAR.COM

GRUPIMAR[®]
MARCELINO GROUP



Place de la République -
Paris, France



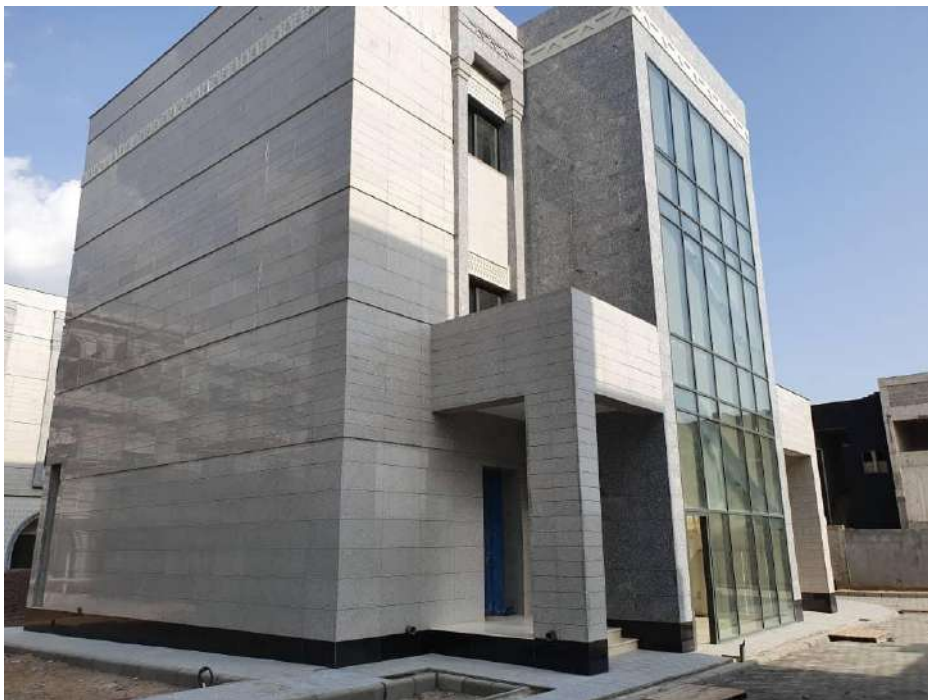
WWW.GRUPIMAR.ES

INFO@GRUPIMAR.COM

GRUPIMAR[®]
MARCELINO GROUP



Saudi Arabi Consulate - Kano, Nigeria



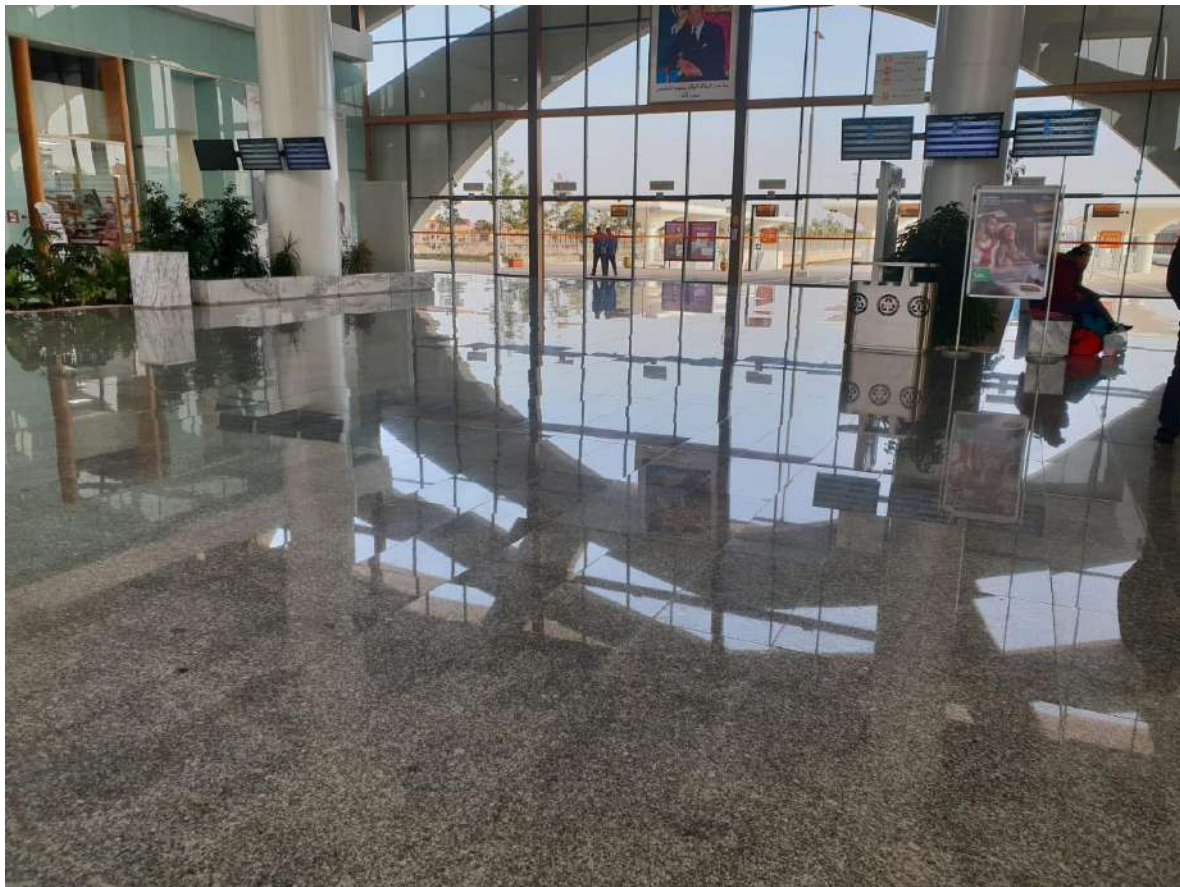
WWW.GRUPIMAR.ES

INFO@GRUPIMAR.COM

GRUPIMAR[®]
MARCELINO GROUP



Gare d'Oujda - Oujda, Morocco



WWW.GRUPIMAR.ES

INFO@GRUPIMAR.COM

GRUPIMAR[®]
MARCELINO GROUP



Gare d'Oujda - Oujda, Morocco



WWW.GRUPIMAR.ES

INFO@GRUPIMAR.COM

GRUPIMAR[®]
MARCELINO GROUP



WWW.GRUPIMAR.ES

INFO@GRUPIMAR.COM

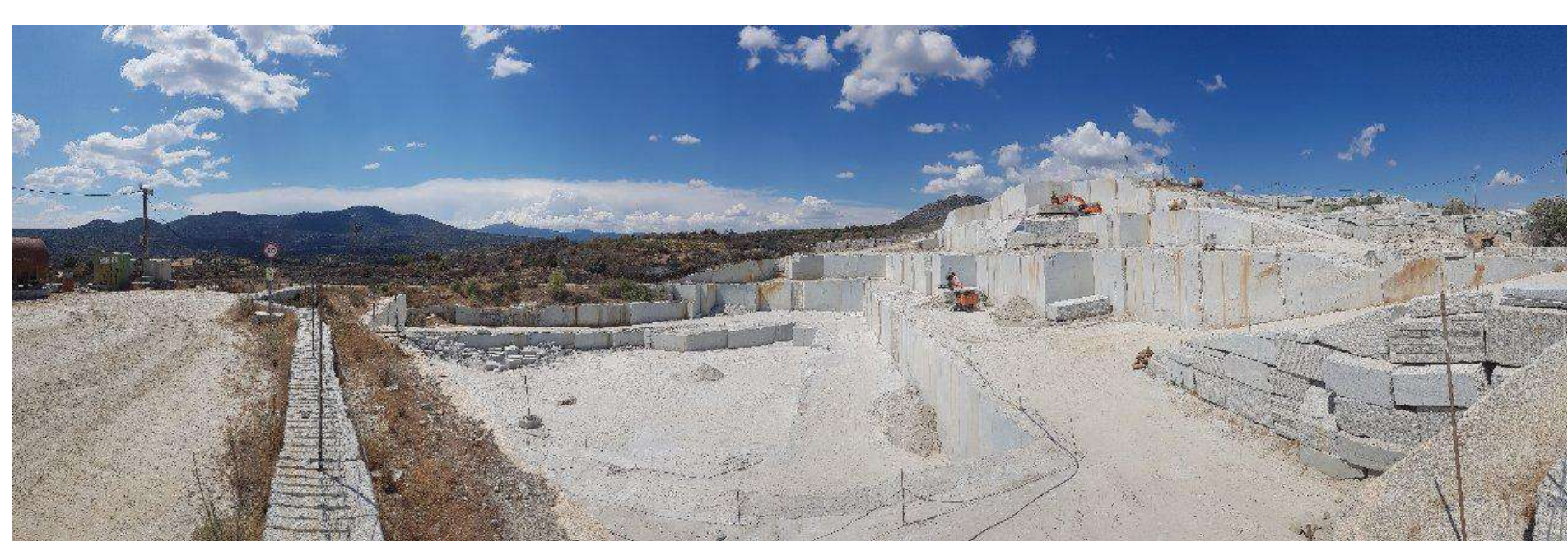
GRUPIMAR[®]
MARCELINO GROUP



WWW.GRUPIMAR.ES

INFO@GRUPIMAR.COM

GRUPIMAR[®]
MARCELINO GROUP



Gris Cadalso Quarry - "Lancha la Osa"

WWW.GRUPIMAR.ES

INFO@GRUPIMAR.COM

GRUPIMAR[®]
MARCELINO GROUP



WWW.GRUPIMAR.ES

INFO@GRUPIMAR.COM

GRUPIMAR[®]
MARCELINO GROUP



WWW.GRUPIMAR.ES

INFO@GRUPIMAR.COM

GRUPIMAR[®]
MARCELINO GROUP



WWW.GRUPIMAR.ES

INFO@GRUPIMAR.COM

GRUPIMAR[®]
MARCELINO GROUP